



**CONIFOX**  
ADVENTURE PARK

# **FACILITIES & ACCESSIBILITY STATEMENT**

## Table of Contents

Introduction .....	3
Conifox .....	3
How to get to Conifox .....	4
Main Entrance .....	5
Car Parking Facilities .....	6
Admission and Entry .....	6
Indoor Activity Centre .....	8
Activity Centre Toilet Facilities .....	11
Activity Centre Toilet Facilities (Play Frame Side) .....	14
Parenting Room .....	15
Adventure Park .....	17
Events .....	18
Event Toilets .....	20
Hospitality Outlets .....	22
Function Suite .....	24
Additional Information .....	27

## **INTRODUCTION**

Welcome to Conifox, while our access statement may not cover all our guests' particular needs, we hope that you will find this information useful prior to arriving and whilst you are at Conifox to ensure you make the most out of your visit.

If you have any questions, please do not hesitate to contact us in advance of your visit to allow us to help you with any requirements you may have. You can contact us by email on [adventurepark@conifox.co.uk](mailto:adventurepark@conifox.co.uk) or call us on 0131 333 1444.

## **CONIFOX**

Conifox Adventure Park is a family run adventure park located in Kirkliston, Edinburgh. We are located off Main Street B9080 (East) and only a short distance from the M90, M9 and M8. We offer a wide range of attractions and activities suitable for the whole family, and we endeavour to be accessible for all visitors.

At Conifox we offer:

- A large 4-story indoor soft play frame which includes 4-lane Goliath Slide, Blue Bullet drop slide, multi-sport court, 2 serpent slides, shoot blasters, rope bridges, and aerial bridges.
- Custom built Toddler Town consisting of 14 mini sized shops, cottages, police station, sensory room, and much more. Encouraging imaginative play in pre-schoolers.
- Separate gated play area for under 3's and parents
- 400-seater café serving up freshly made delicious food, drinks, ice creams and cakes. With a variety of hand-made dishes for both adults and children including vegetarian, vegan and gluten-free options.
- Three party rooms.
- 120 seater function suite with self-contained toilets (male, female & accessible), large bar balcony and lawn.
- Adventure Park with a 9-hole Footgolf course, Pedal Go-Karts, Off-Road Pedal Tractors, Kid's Pedal Tractor Farm, Springers, Giant Jump Pillow, Trampolines, Swings, Balance Beams and Rope Bridge.
- The Fetching Fox gastropub
- Family focused events throughout the year including Easter, Fox Fest, Halloween and Christmas.
- Corporate events activities and packages.

We are committed to ensuring we always have staff that are friendly and trained correctly in their area on duty to ensure you have a warm welcome an enjoyable, memorable experience.

## **HOURS OF OPERATION**

During school terms Conifox is open Wednesday to Sunday from 9:30am to 5:00pm. During school holidays Conifox is open 7-days a week from 9:30am to 5:00pm. For further information guests should visit the Conifox website [www.conifox.co.uk](http://www.conifox.co.uk) or call 0131 333 1444.

## **TICKETS**

All tickets are to be purchased online prior to arrival this also includes tickets for events. Please visit [www.conifox.co.uk](http://www.conifox.co.uk) and click the BOOK NOW icon to purchase tickets, further information on tickets and prices can be found by clicking Tickets & Prices at the top of the home page.

## HOW TO GET TO CONIFOX

### Driving:

Conifox is fully accessible by car and is only a few miles from major motorways M8, M9, and M90. For Sat Nav's, the Conifox postcode is EH29 9ER.

### From Fife:

Proceed southbound over the Queensferry Crossing and take the first exit 1A. Take the first left on to the A904 (Builyeon Road) follow the A904 until the Echline Junction and take the second exit on to the B800 (Ferry Muir Road). Straight on (second exit) at the next roundabout following the B800 into Kirkliston. Stay on the main Kirkliston road (B800) until you come to a main junction that crosses Main Street and Station Road and turn left on to the B908. Stay on the B908 for approximately 400-meters and Conifox is on your right – watch for a large sign.

### From Edinburgh:

There are a number of routes to Conifox from Edinburgh. Guest coming from Barton should proceed on the Queensferry Road out of Edinburgh and exit on to the Burnshot Road and proceed on this road for approximately 5-miles. At the end of the Burnshot Road, turn sharp right on to the B908 for approximately 400-meters and Conifox is on your right – watch for a large sign.

Guest leaving Edinburgh on the A8 (Glasgow Road) should proceed past Edinburgh Airport and head toward the Newbridge Roundabout. At the Newbridge Roundabout take the third exit on to the A89, follow the A89 to the B800 (right turn) stay on the B800 until you come to a main junction that crosses Main Street and Station Road and turn left on to the B908. Stay on the B908 for approximately 400-meters and Conifox is on your right – watch for a large sign.

### From Glasgow:

Following the M8 from Glasgow, take the M9 exit and proceed to the A89 exit. At the A89 exit to the Newbridge Roundabout and take the second exit following the A89. Follow the A89 for approximately ½ mile and turn right on to the B800, follow the B800 to Kirkliston, all the way to the crossroads. At the crossroads turn right stay on the B908 for approximately 400-meters and Conifox is on your right – watch for a large sign.



### Bus

Conifox is located on a number of bus routes. The following buses stop in Kirkliston, and it is only a short walk to Conifox.

- X38 - the Stirling to Edinburgh bus which stops in Kirkliston crossroads.
- X51 - Dunfermline to Livingston bus stops in Kirkliston Community Centre.
- 63 – Balerno to Queensferry stop in Kirkliston crossroads.

For up to date timetables please visit: [www.firstbus.co.uk](http://www.firstbus.co.uk) [www.stagecoachbus.com](http://www.stagecoachbus.com)



### Train

The nearest railway station is located in South Queensferry at Dalmeny. Following your arrival at Dalmeny Station, guests can catch a bus to Conifox from directly outside the railway station bus number 43. Train times can be found on the Scotrail website <http://www.scotrail.co.uk>.



## Taxi

Taxis are available from South Queensferry, and we recommend the following firms. Please inquiry if their taxis are wheelchair accessible:

- Dalmeny Cars – 0131 3000 767
- McKenzie Cars – 077967 432 485

If you are traveling from Edinburgh, we recommend Capital Taxis – 0131 229 2468.

All Central Taxis are wheelchair accessible. They offer a mix of 5-seater TX Hackney cabs, 6-seater Mercedes M8 taxis and Peugeot E7 taxis, each of which is supplied with a wheelchair ramp, seatbelts and additional safety anchors. All drivers have completed training in Wheelchair Access and Disability Awareness.



## CYCLE RACKS

If you choose to cycle to Conifox we have ample cycle racks available where you can leave your bike.



Main entrance to Conifox



Main access road leading to car parks



## CAR PARKING FACILITIES

There is ample free car parking facilities at Conifox. There is designated disabled parking area which can accommodate up to 25 cars. It is approximately 200 meters walk from the disabled parking area to the Activity Centre reception. The path to the Activity Centre is a hardcore gravel path which is accessible for prams, buggies and wheelchairs. There is lighting on the path that will direct you to the Activity Centre main entrance and reception.



Main access to car parking & disabled parking area



Disabled parking area

We ask that all guest park their cars correctly and be courteous to other drivers. Please note that Conifox Ltd can not be held responsible to any damage sustained to vehicles parked in the Conifox carpark.

## ADMISSION AND ENTRY

Admission to both the Activity Centre and the Adventure Park is through two sets of large double doors which measure 185cm in width these doors open inwards and are wide enough for wheelchairs, prams and buggies.



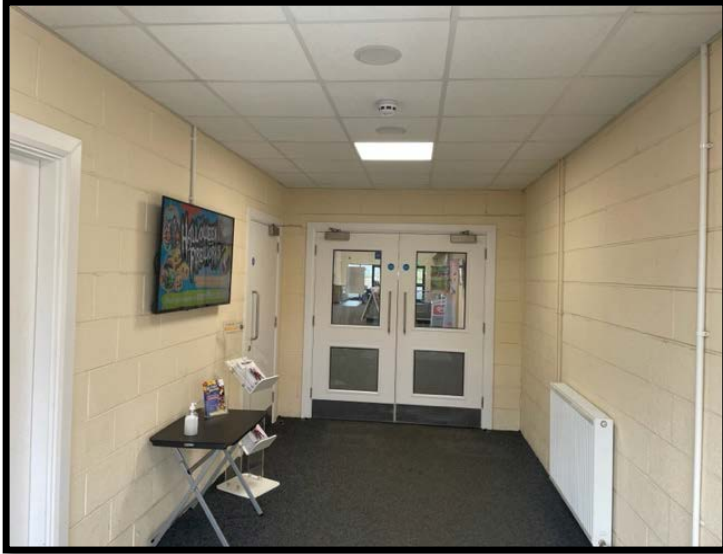
We have 4 sessions each lasting 1.5hours, plenty of time for you to enjoy the play frame. We close for 30mins between each session, this allows us to clean down the play frame and get ready for the next session. Session times are: 9:30am – 11:00am, 11:30am – 1:00pm, 1:30pm – 3:00pm, 3:30pm – 5:00pm. The café remains open between sessions, so you can enjoy lunch, a light snack, something sweet or a hot or cold beverage.



Path to the Activity Centre from car park



Main entrance to Activity Centre



Entrance corridor to Activity Centre



Activity Centre

### **INDOOR PLAY AREAS**

All tickets must be pre-booked in advance through our website. Please note that all tickets purchased are non-refundable although we can transfer tickets to another date and time slot. If you require to move your ticket, please email us your order ID number and the new date and time slot to [adventurepark@conifox.co.uk](mailto:adventurepark@conifox.co.uk) or call us on 0131 333 1444 - option 1 and we will be happy to make the change.

To gain access to either Indoor Play Area or Adventure Park you must first report to our main reception which is located just inside the Activity Centre. Please present your email confirmation to the staff at reception who will then confirm your booking and issue you with the relevant wrist band.





Activity Centre reception



Play Frame access gate

Once you have purchased your play frame ticket from the main Activity Centre reception you should make your way up to the play frame access gate the access gate is 92cm in width. From there you can access the three different play zones, toddlers' area, toddler town and the play frame.

Please be aware of our Rules of Play to ensure you have a safe and fun visit. Children and adults are required to wear long trousers and long sleeved shirts and must wear socks at all times on the play equipment to minimise risk of friction burns or personal injury.

For information on quieter times please contact us in advance on 0131 333 1444 or email us at [adventurepark@conifox.co.uk](mailto:adventurepark@conifox.co.uk)

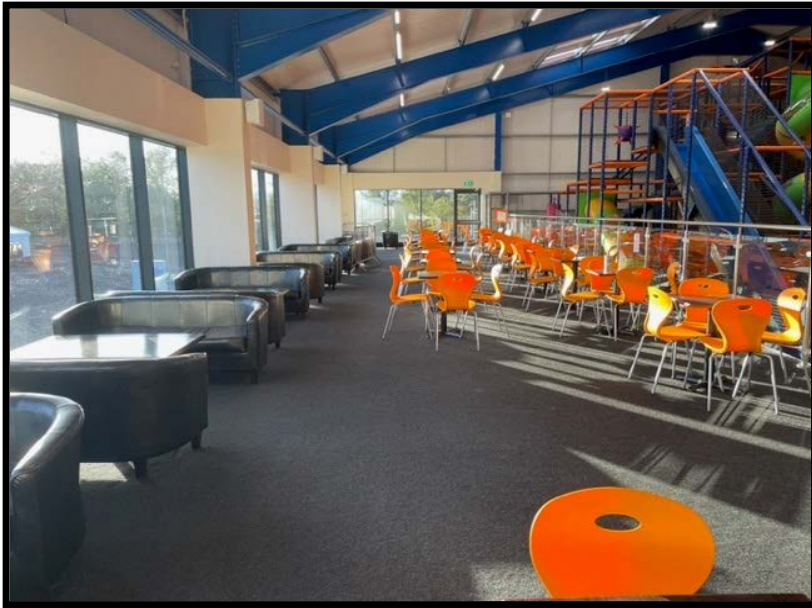
We have a wide variety of seating areas throughout the Activity Centre and Adventure Park to suite your individual needs. Within the Activity Centre there are four distinct areas of seating areas.



Seating area – café side



Seating area – Play Frame side



**Mezzanine seating area**



**Relaxed seating – café side**



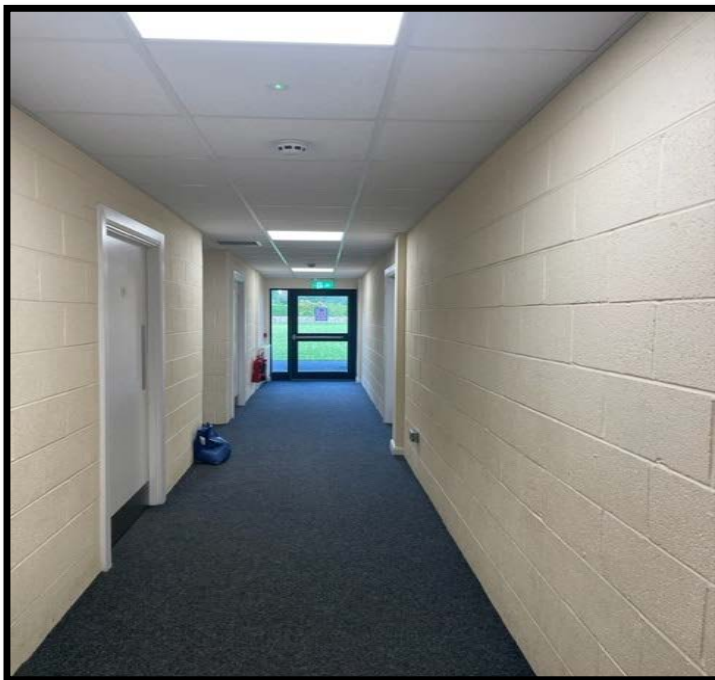
### **ACTIVITY CENTRE TOILET FACILITIES (café side)**

There are public toilet facilities throughout the Activity Centre, these facilities include male toilets, female toilets and accessibility toilets with baby changing facilities.

The toilets on the café side of the Activity Centre are accessed via a corridor to the left of the main reception desk. There are male, female and accessible toilets with baby changing facilities. The door leading to the toilets is 86cm wide and the toilet corridor is 156cm wide.



Activity Centre toilet entrance (café side)



Activity Centre toilet corridor (café side)

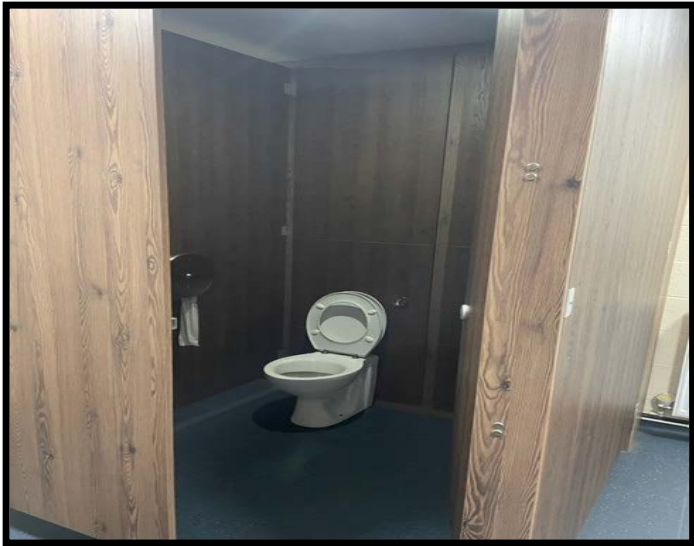


Activity Centre female toilets (café side)



Activity Centre female toilets (café side)





Activity Centre male toilets (café side)



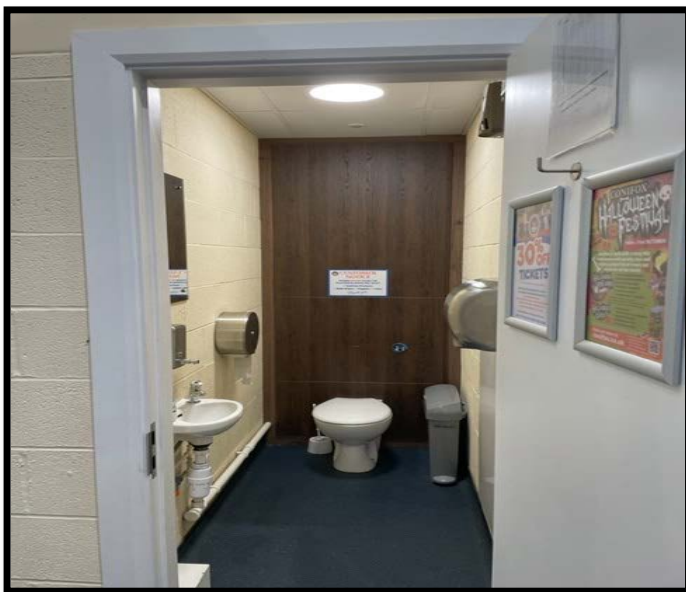
Activity Centre accessible toilet (café side)

### **ACTIVITY CENTRE TOILET FACILITIES (Play Frame side)**

Located on the play frame side of the Activity Centre is bank of toilets for guests that are using the Play Frame. They consist of two male toilets, two female toilets and one accessible toilet. There are baby changing facilities within the accessible toilets along with an emergency pull cord. The accessible toilet door is 90cm wide.



Activity Centre toilets (Play Frame side)



Accessible toilet (Play Frame side)

## **PARENTING ROOM**

Located within our Activity Centre is a Parenting Room which for those wishing to nurse in private or change their little ones, with comfy sofas, toilets and plenty baby changing facilities.



Parenting Room entrance



Parenting Room



Parenting Room



Parenting Room toilet

### **ADVENTURE PARK**

The great Scottish weather can be ever-changing and for this reason we ask that you watch the weather forecast carefully and bring suitable clothing for all weathers. When it has been raining, we recommend wellington boots as they are great for jumping in puddles and keeping your feet dry on wet grass.

There are 2 sessions every day they are at 9:30am & 1:30pm. Access to the Adventure Park is via the Activity Centre, you are able to access the Activity Centre café, toilets and seating areas when using the Adventure Park. You will be issued with a QR code which will allow you to access the Adventure Park by scanning the QR code at the Adventure Park access gate. Access for wheelchairs, buggies and prams is via a gate to the side of the access gates which measures 92cm in width.

The Adventure Park has a wide range of surfaces some of which can be sometime challenging with a wheelchair, pram and buggies.



Adventure Park access gate entrance



Adventure Park





**Adventure Park access gate scanner**

## EVENTS

Throughout the year Conifox produces and delivers a number of immersive events, these include Easter, Fox Fest, Halloween and Christmas. These events are designed for all of our guests, however, please be aware that some surfaces are uneven and could cause some access difficulties. For further details on accessibility at our events please contact us in advance of the event at [events@conifox.co.uk](mailto:events@conifox.co.uk)

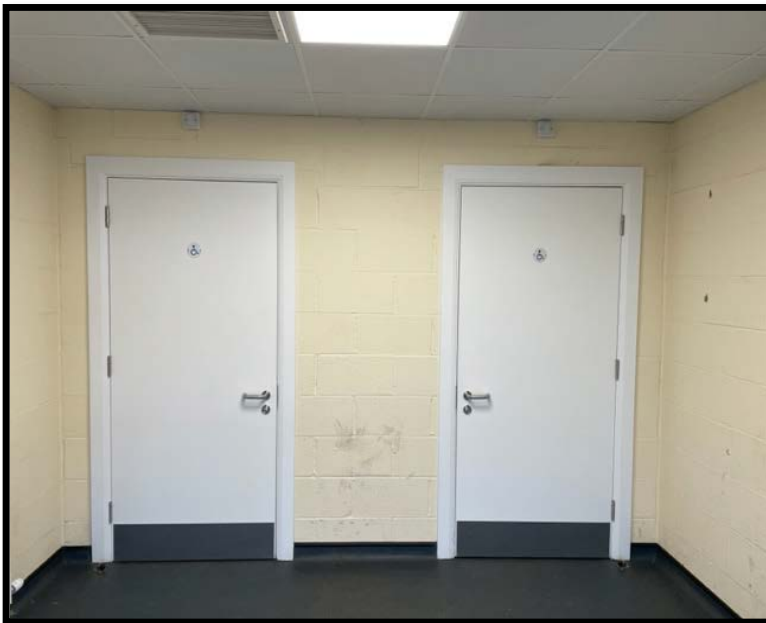


## EVENT TOILETS

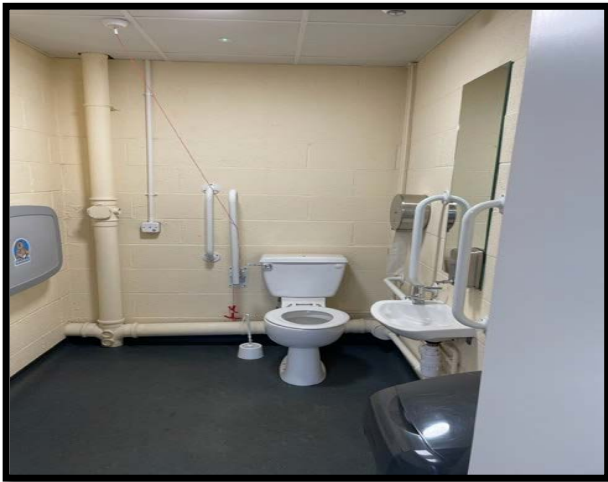
Conifox have dedicated event toilets which are designed to cater for high volumes of visitors that attend our events. The event toilets consist of two assessable toilets, male toilets and female toilets. One of the accessible toilets has baby changing facilities included.



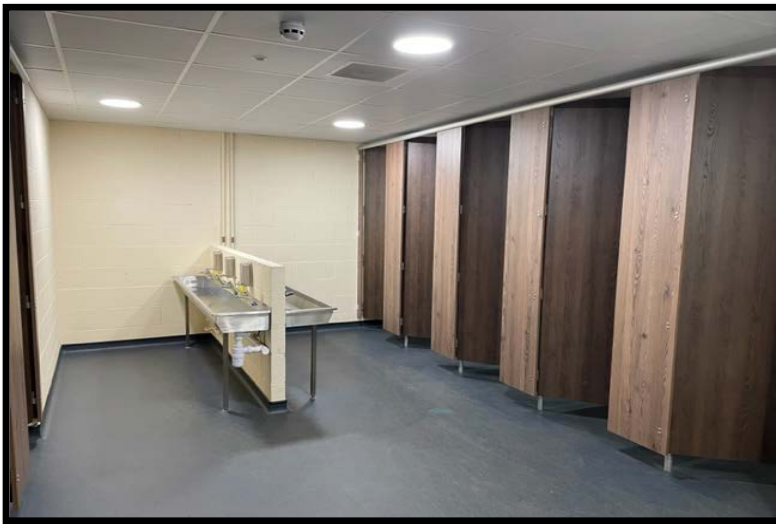
Event toilet entrance



Accessible toilet entrance



Accessible event toilet



Female event toilets



Male event toilets



## HOSPITALITY OUTLETS

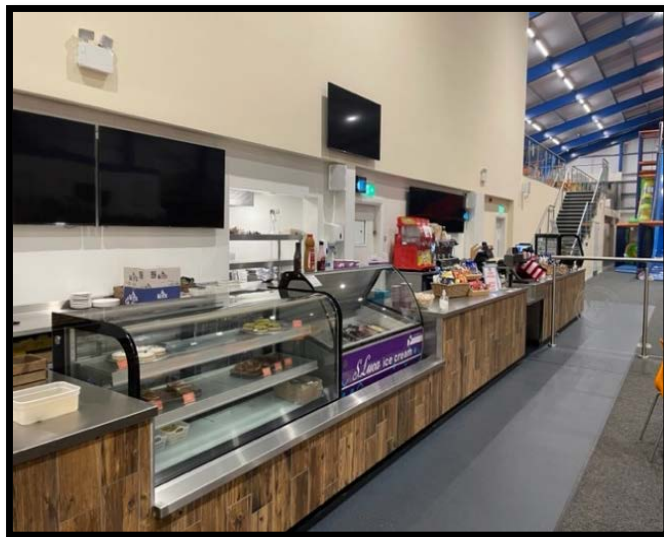
At Conifox we have a wide range of hospitality outlets these include our Activity Centre café and snack bar and events bar, please note that all of these outlets are not available all of the time.

The Activity Centre menu offers a wide range of menu options including breakfast rolls, light lunches, children's menu, hot and cold drinks, tray bakes and cakes. We can cater for gluten free, dairy free, vegetarian, vegan and all allergies. Please do not hesitate to speak to a member of staff if you have any questions or need assistance regarding any of our menu options.

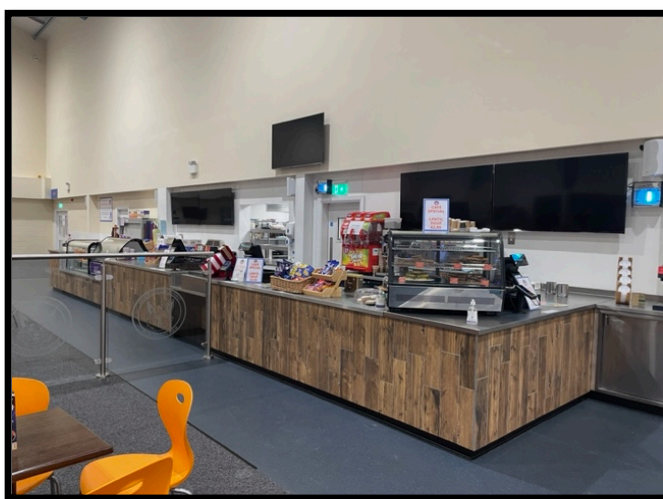
For our smaller visitors we have highchairs available in all of the seating areas and our menu is offered in large print format also.

The Event Bar is open when we are running events and offers a varied menu which caters for all dietary requirements and allergies. We also offer a selection of alcoholic beverages, soft drink, tea and coffee.

Conifox is a cashless business, we only accept card payment only. We accept the following cards: Visa, Mastercard, Apple Pay and Android Pay.



Café



Café – Play Frame side





**Events Bar**



**Event Bar seating area**

### **FUNCTION SUITE**

Conifox's function suite is ideal venue for meetings, special occasions and weddings. The function suite is located on the first floor of the Activity Centre and is accessible via a flight of stairs, there is a total of 21 stairs which lead to the Function Suite. After the initial 9 stairs there is a rest area which measures 180cm by 170cm then a further 12 stairs.

Access to the Function Suite is through two large double doors which open outward and measure 185cm. The function suite is a large room with no additional stairs, it consists of a balcony which is accessible through a door which opens outwardly and measures 95cm which leads from the Function Suite. There is also toilets within the function suite which consist of a male, female and an accessible toilets.



Stair access to the Function Suite



Lift to Function Suite

The lift door opens outwards and is 90cm wide, internally the lift is 1,400cm deep and 1,100cm wide. To access the first floor, you must press and hold down the 1<sup>st</sup> floor button until you have reached the 1<sup>st</sup> floor. There is no music playing in the lift and the floor is a non-slip flooring material.



## Lift operating buttons and instructions



Entrance doors to the Function Suite



Function Suite



Function Suite male toilets



**Function Suite female toilets**



**Function Suite accessible toilet**

The following toilets have emergency pull cords fitted. In the event of an emergency and the pull cord being activated a member of staff will immediately report to that toilet and investigate the cause of the pull cord being activated and take action accordingly.

Toilets that have emergency pull cords fitted:

- Function Suite accessible toilet
- Events accessible toilet x 1
- Activity Centre accessible toilet
- Play frame accessible toilet
- Function suite accessible toilet

All of your toilets are regularly checked to ensure they maintain a high standard of cleanliness. However, if any of our toilets fall below the acceptable standard, please inform a member of staff immediately.



## **ADDITIONAL INFORMATION**

### **CUSTOMER CARE**

If you have any questions or concerns regarding access to either the Activity Centre, Adventure Park or any of the events please do not hesitate to contact us on 0131 333 1444 or emailing [adventurepark@conifox.co.uk](mailto:adventurepark@conifox.co.uk).

### **FIRST AID**

During opening hours, we always have a number of staff on duty that are first aid trained. In the event that you or one of your party requires first aid attention they should immediately speak to a member of staff. Any accident that is reported will be recorded on a first aid accident form and take down all relevant information. Please note this will be in line with GDPR, we will securely store your information and you can request it at any time.

### **LOST PROPERTY**

In the event that you leave an item of the clothing, or a personal possession please contact the Activity Centre by calling 0131 333 1444 or emailing [adventurepark@conifox.co.uk](mailto:adventurepark@conifox.co.uk).

### **BREASTFEEDING**

We are proud to be part of the NHS Breastfeeding Friendly Scotland scheme, we want to ensure you feel totally comfortable during your Conifox visit. Parents are welcome to breastfeed anywhere at Conifox. We have a dedicated Parenting Room if you would like some quiet space without distractions.

### **ASSISTANT DOGS**

Assistant dogs are welcomed at Conifox. If you require to bring an assistance dog to Conifox, please inform our staff when you arrive. Dogs must be registered with the ADI or IGDF or provide us with a ADUK identification booklet.

### **PORTABLE HEARING LOOP**

These can be found at our Main Reception Desk inside the Activity Centre with full instructions upon request and available on our website.

### **STAFF TRAINING**

All staff have received disability awareness training.

### **SMOKING**

As a children's park, and for the health and well being of our visitors and guests we have restricted areas in which visitors are allowed to smoke and vape. We ask that you respect this and if you wish to smoke or vape, you do so in the designated areas. Please help us keep Conifox clean and tidy and dispose of your cigarette end in the cigarette bins provided.

### **BUILDING EVACUATIONS**

In the event that the Activity Centre or an area that is holding an event all guests can be assured that fully comprehensive plans are in place to evacuate all guests in a safe and effectively. The evacuation process makes provision for evacuating guests with additional mobility requirements as well as those with pushchairs and prams. Regular drills and training takes place to ensure all staff are fully familiar with the procedures.



**PUBLIC WI-FI**

There is public Wi-Fi facilities throughout the park and can be accessed via Conifox Free Wi-Fi, there is no password required.

**EMERGENCY EVACUATION PROCEDURES**

We have emergency evacuation procedures for guests that require assistance. In the event of an emergency which requires an evacuation of the area, please make the staff member present aware that you require additional assistance.

**CONTACT INFORMATION**

If you have any questions or feedback on our accessibility information or wish to make a personal inquiry about our accessibility, please feel free to contact us.

Conifox  
Foxhall, Kirkliston  
Edinburgh EH29 9ER  
Tel: 0131 333 1444

[www.conifox.co.uk](http://www.conifox.co.uk)

Last updated February 2024